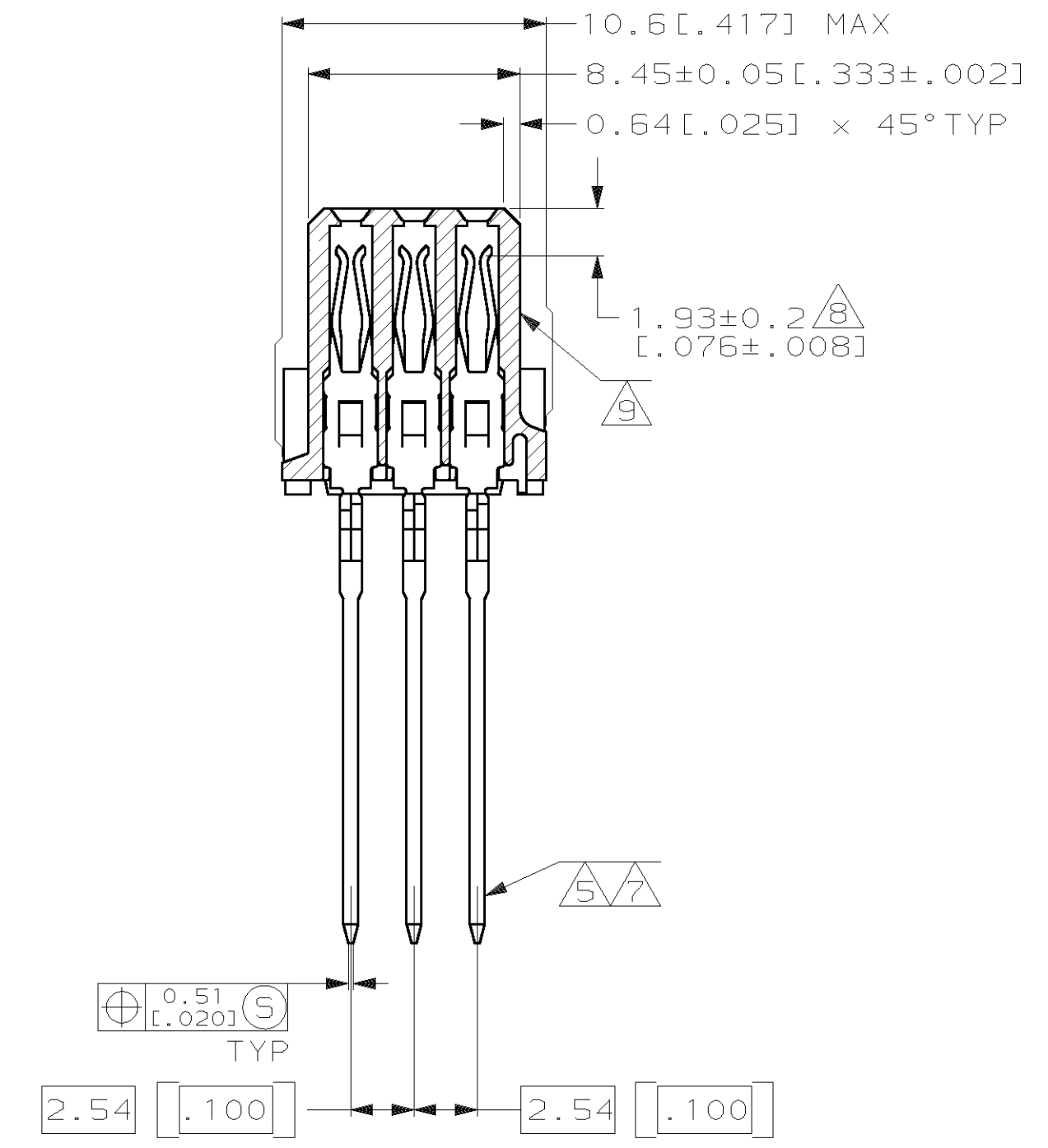
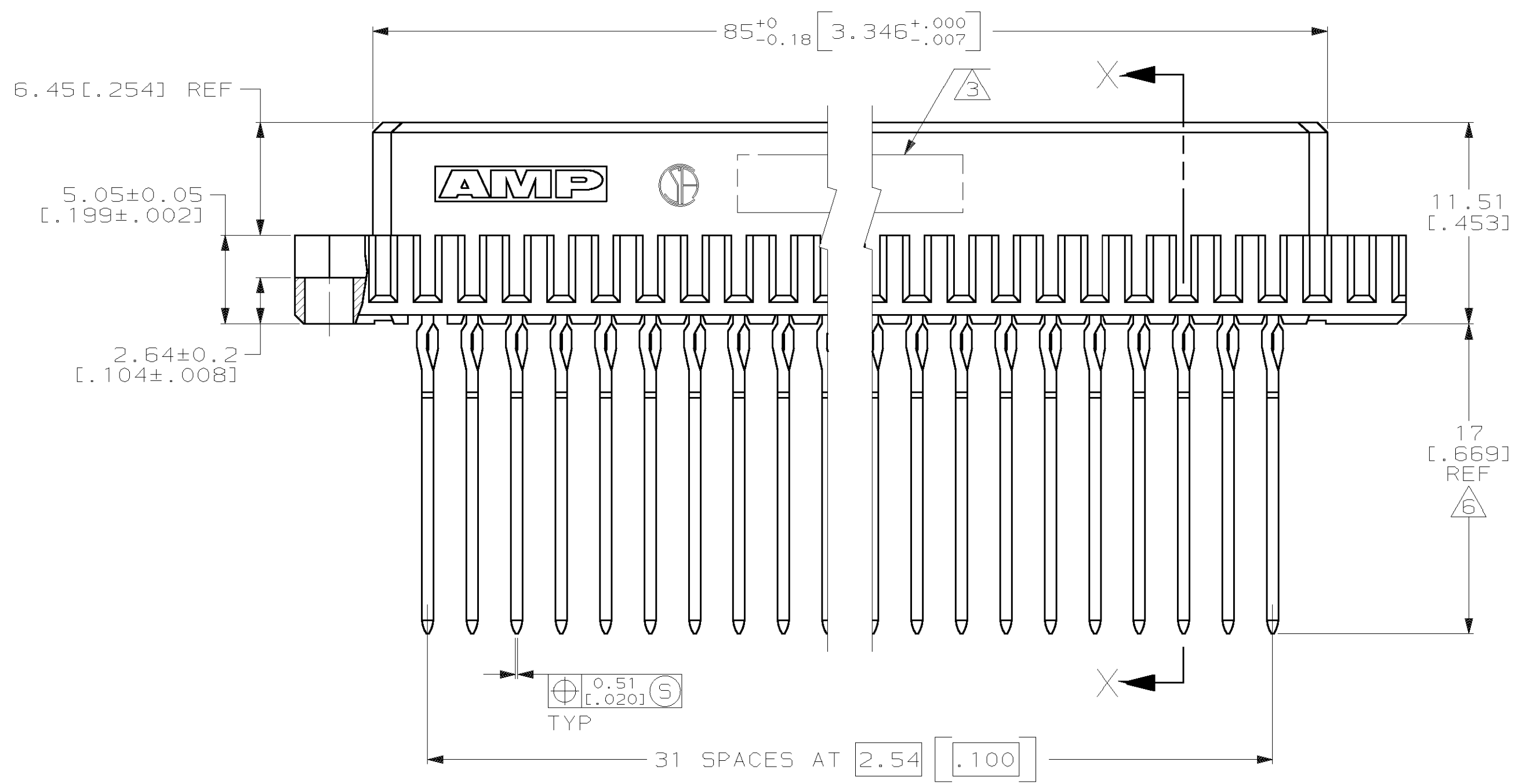
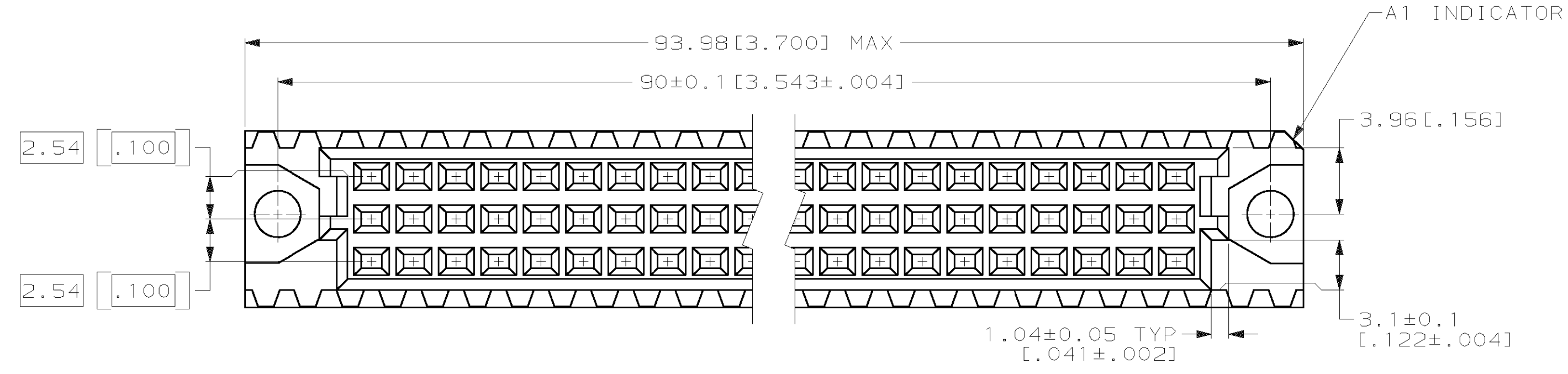
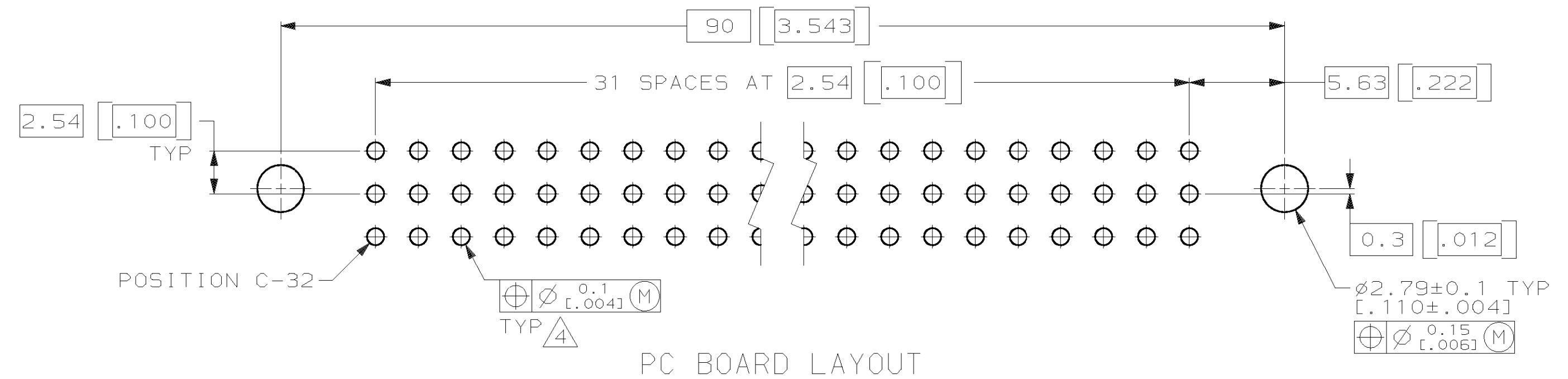
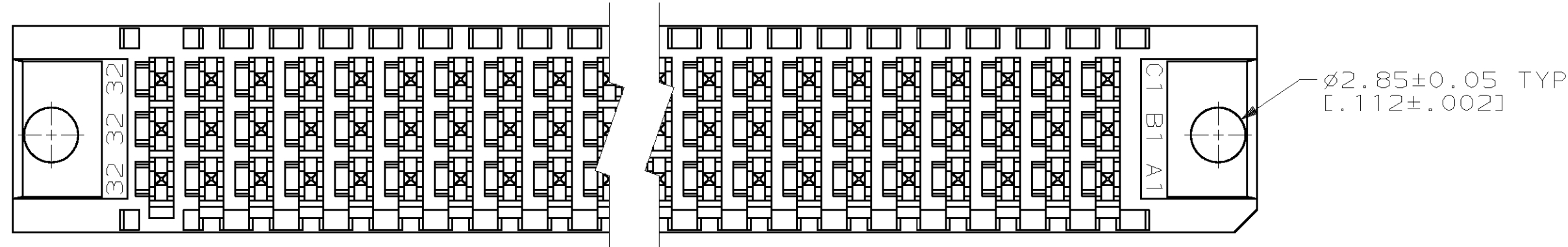


LOC	DIST	P	F	ZONE	LTR	DESCRIPTION	DATE	APPD
AD	25					O DRAWN	-	-
						A EC 0010-1152-95	10/10/95	LSB
						B REVISED PER 0503-0580-97	9-30-97	JG
						C PER EC 0620-0147-98	T.S.	6-4-98 CR
						D REV PER EC 001B-0136-99	06 OCT 99	CR



- △ HOUSING MATERIAL: GLASS-FILLED POLYESTER. COLOR: GRAY.
- △ CONTACT MATERIAL: PHOSPHOR BRONZE.
- △ PART NUMBER AND DATE CODE HOT STAMPED IN THIS APPROXIMATE AREA.
- △ ACTION PIN POSTS REQUIRE 1.57 [.062] MINIMUM THICK PC BOARD. RECOMMENDED PC BOARD DRILLED HOLES ARE 1.15±0.025 [.0453±.0010] DIAMETER WITH 0.02-0.08 [.001-.003] COPPER AND 0.008 [.0003] MINIMUM TIN-LEAD PLATING. FINISHED HOLE AFTER PLATING IS 1.02±0.08 [.040±.002] DIAMETER.
- △ CONTACT FINISH: DIN 41612 CLASS 2 IN CONTACT AREA. TIN-LEAD PLATE ON POSTS.
- △ TAIL LENGTH AFTER SEATING IN PC BOARD.
- △ CONTACT FINISH: DIN 41612 CLASS 2 IN CONTACT AREA AND LAST 5.08 [.200] OF POST.
- △ CONTACT POINT AFTER SEATED IN PC BOARD.
- △ HOT STAMPING ON THIS SIDE.



DO NOT SCALE PRINT. UNLESS SPECIFIED DIMENSIONS IN mm [INCHES] TOLERANCES ON:		DR L. BRINER 7/26/94	AMP Incorporated Harrisburg, PA 17105-3508		
2 PLC DEC ±0.13 [.005]		CHK R. PATTERSON 8/9/94			
3 PLC DEC ±		APPD R. PATTERSON 8/9/94	NAME		
ANGLES ±		APPD R. PATTERSON 8/9/94	RECEPTACLE ASSEMBLY, EUROCARD, TYPE "C"		
HOUSING: △		MATERIAL	PRODUCT SPEC	SIZE D	CAGE CODE 00779
CONTACTS: △		FINISH	APPLICATION SPEC	DRAWING NO C-148059	DRAWING NO
CONTACTS: △			WEIGHT	SCALE 4:1	SHEET 1 OF 1

THIS DRAWING IS A CONTROLLED DOCUMENT FOR AMP INCORPORATED. IT IS SUBJECT TO CHANGE AND THE CONTROLLING ENGINEERING ORGANIZATION SHOULD BE CONTACTED FOR THE LATEST REVISION.