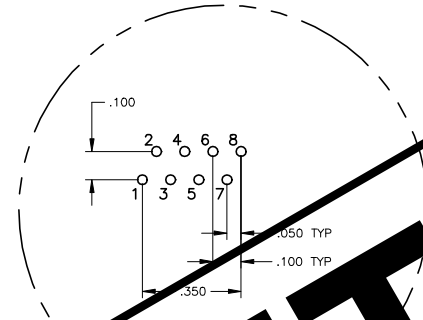
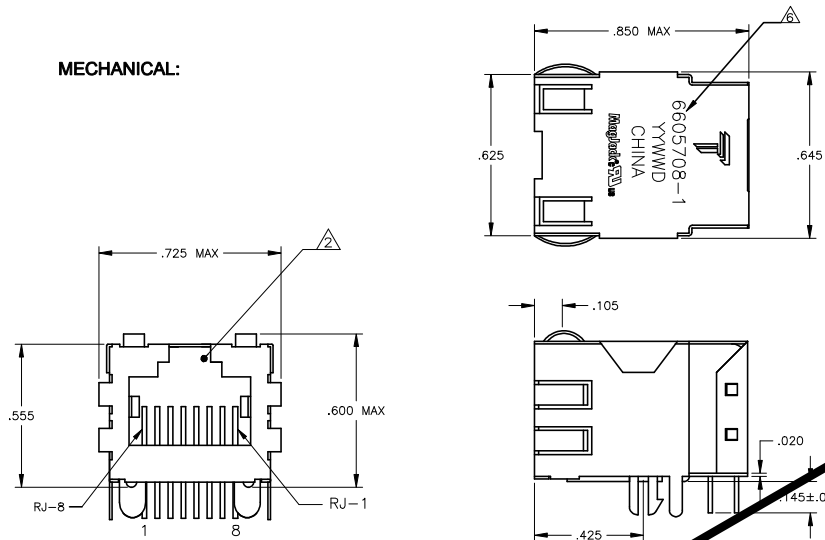


THIS DRAWING AND THE SUBJECT MATTER SHOWN THEREON ARE CONFIDENTIAL AND THE PROPERTY OF BEL/STEWART/TRP CONNECTOR AND SHALL NOT BE REPRODUCED, COPIED, OR USED IN ANY MANNER WITHOUT THE WRITTEN CONSENT OF TRP CONNECTOR.

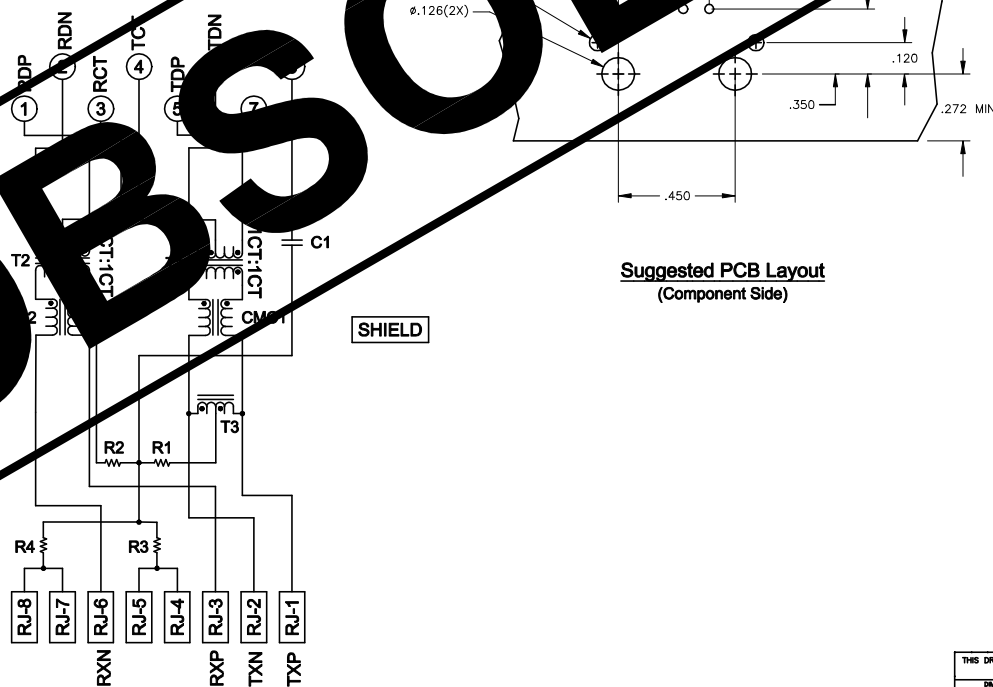
PRODUCT MAY BE PROTECTED BY ONE OR MORE OF THE FOLLOWING US PATENTS:
 5736910 5939955 6425781 6428361 6554638 6840817 7123117
 7429195 7717749 7808751 6217391 6149050 7924130

REVISIONS			
REV	DESCRIPTION	DATE	APP'D
1	EC-1411035 COMPANY LOGO CHANGE	30DEC2014	ST TL

MECHANICAL:



714 SERIES MAGNETIC CIRCUIT



**Suggested PCB Layout
(Component Side)**

- 1. MATERIALS:
 HOUSING - THERMOPLASTIC PET POLYESTER FLAMMABILITY RATING UL 94V-0.
 SHIELD - .003 THICK, C26800 BRASS PREPLATED WITH 30μINCH MIN SEMI-BRIGHT NICKEL. SOLDER TABS POST DIPPED WITH 100μINCH MIN SAC SOLDER.
 CONTACTS - .0157 X 0.018" PHOSPHOR BRONZE, 50μINCH MIN OVERALL UNDERPLATE WITH SELECT 50μINCH MIN HARD GOLD FINISH PLATE. SOLDER TAILS WITH 100μINCH MIN MATTE TIN AND/OR SAC SOLDER DIP.
- 2. RJ45 JACK CAVITY CONFORMS TO FCC RULES AND REGULATIONS PART 68, SUB PART F.
- 3. PERFORMANCE:
 RETURN LOSS: 100 OHMS
 INSERTION LOSS: 1.1dB MAX FROM 0.5MHz TO 100MHz
 RETURN LOSS RATIO (ICHP-CABLE): TX = 1.1, RX = 1.1
 OPEN CIRCUIT INDUCTIVE REACTANCE (SCL): 350μH MIN @100kHz, 0.1VRMS, 8mADC BIAS, 100μS TO 70μS TX AND RX
 PERFORMANCE:
 LOSS (IL): 1.1dB MAX FROM 0.5MHz TO 100MHz
 LOSS (RL): 18dB MIN FROM 0.5MHz TO 30MHz
 18-20LOG(1/50dB) MIN FROM 30MHz TO 60MHz
 12dB MIN FROM 60MHz TO 80MHz
 CROSSTALK ATTENUATION: 35dB MIN FROM 0.5MHz TO 40MHz
 33-20LOG(f/50dB) MIN FROM 40MHz TO 100MHz
 COMMON MODE REJECTION RATIO (CMRR): 30dB MIN FROM 0.5MHz TO 100MHz
 ISOLATION VOLTAGE: 2250VDC (MAX) FOR 60 SECONDS WITH A RISE TIME OF 500V/SEC.
- 4. OPERATING TEMPERATURE: FROM 0° TO -70°C.
- 5. INDICATED CONNECTIONS ARE FOR NIC CONFIGURATION. THE MAGNETICS ARE ASYMMETRIC, AND ARE NOT AUTO-MDI/MDIX CAPABLE.
- 6. TRP CONNECTOR LOGO, PART NUMBER, DATE CODE, COUNTRY OF ORIGIN AND AGENCY APPROVAL MARKING IN APPROXIMATE LOCATION SHOWN.
- 7. THESE PARTS ARE RECOMMENDED FOR WAVE SOLDERING PROCESS, PREHEAT TEMPERATURE IS 120°C TO 160°C, 120 SECONDS TO 180 SECONDS, PEAK WAVE SOLDERING TEMPERATURE IS 260°C MAX, 10 SECONDS MAX.
- 8. OBSOLETE PARTS: OBSOLETE CIS STREAMLINING PER D.RENAUD/D.SINISI

OBSOLETE

C1 = 1000 pF, 2KV CAPACITOR
 R1-R4 = 75 OHMS, 1/16W RESISTORS

OBSOLETE	NO	6605708-2
	YES	6605708-1
	2KV DECOUPLING CAPACITOR	PART NUMBER

THIS DRAWING IS A CONTROLLED DOCUMENT.		REV. T. FARELA - DOCKS	DATE	10/10/10
DIMENSIONS: INCHES		REV. D. FARELA	DATE	10/10/10
UNLESS SPECIFIED:		REV. D. FARELA	DATE	10/10/10
1	0.005	REV. D. FARELA	DATE	10/10/10
2	0.005	REV. D. FARELA	DATE	10/10/10
3	0.005	REV. D. FARELA	DATE	10/10/10
4	0.005	REV. D. FARELA	DATE	10/10/10
5	0.005	REV. D. FARELA	DATE	10/10/10
6	0.005	REV. D. FARELA	DATE	10/10/10
7	0.005	REV. D. FARELA	DATE	10/10/10
8	0.005	REV. D. FARELA	DATE	10/10/10
9	0.005	REV. D. FARELA	DATE	10/10/10
10	0.005	REV. D. FARELA	DATE	10/10/10
11	0.005	REV. D. FARELA	DATE	10/10/10
12	0.005	REV. D. FARELA	DATE	10/10/10
13	0.005	REV. D. FARELA	DATE	10/10/10
14	0.005	REV. D. FARELA	DATE	10/10/10
15	0.005	REV. D. FARELA	DATE	10/10/10
16	0.005	REV. D. FARELA	DATE	10/10/10
17	0.005	REV. D. FARELA	DATE	10/10/10
18	0.005	REV. D. FARELA	DATE	10/10/10
19	0.005	REV. D. FARELA	DATE	10/10/10
20	0.005	REV. D. FARELA	DATE	10/10/10
21	0.005	REV. D. FARELA	DATE	10/10/10
22	0.005	REV. D. FARELA	DATE	10/10/10
23	0.005	REV. D. FARELA	DATE	10/10/10
24	0.005	REV. D. FARELA	DATE	10/10/10
25	0.005	REV. D. FARELA	DATE	10/10/10
26	0.005	REV. D. FARELA	DATE	10/10/10
27	0.005	REV. D. FARELA	DATE	10/10/10
28	0.005	REV. D. FARELA	DATE	10/10/10
29	0.005	REV. D. FARELA	DATE	10/10/10
30	0.005	REV. D. FARELA	DATE	10/10/10
31	0.005	REV. D. FARELA	DATE	10/10/10
32	0.005	REV. D. FARELA	DATE	10/10/10
33	0.005	REV. D. FARELA	DATE	10/10/10
34	0.005	REV. D. FARELA	DATE	10/10/10
35	0.005	REV. D. FARELA	DATE	10/10/10
36	0.005	REV. D. FARELA	DATE	10/10/10
37	0.005	REV. D. FARELA	DATE	10/10/10
38	0.005	REV. D. FARELA	DATE	10/10/10
39	0.005	REV. D. FARELA	DATE	10/10/10
40	0.005	REV. D. FARELA	DATE	10/10/10
41	0.005	REV. D. FARELA	DATE	10/10/10
42	0.005	REV. D. FARELA	DATE	10/10/10
43	0.005	REV. D. FARELA	DATE	10/10/10
44	0.005	REV. D. FARELA	DATE	10/10/10
45	0.005	REV. D. FARELA	DATE	10/10/10
46	0.005	REV. D. FARELA	DATE	10/10/10
47	0.005	REV. D. FARELA	DATE	10/10/10
48	0.005	REV. D. FARELA	DATE	10/10/10
49	0.005	REV. D. FARELA	DATE	10/10/10
50	0.005	REV. D. FARELA	DATE	10/10/10
51	0.005	REV. D. FARELA	DATE	10/10/10
52	0.005	REV. D. FARELA	DATE	10/10/10
53	0.005	REV. D. FARELA	DATE	10/10/10
54	0.005	REV. D. FARELA	DATE	10/10/10
55	0.005	REV. D. FARELA	DATE	10/10/10
56	0.005	REV. D. FARELA	DATE	10/10/10
57	0.005	REV. D. FARELA	DATE	10/10/10
58	0.005	REV. D. FARELA	DATE	10/10/10
59	0.005	REV. D. FARELA	DATE	10/10/10
60	0.005	REV. D. FARELA	DATE	10/10/10
61	0.005	REV. D. FARELA	DATE	10/10/10
62	0.005	REV. D. FARELA	DATE	10/10/10
63	0.005	REV. D. FARELA	DATE	10/10/10
64	0.005	REV. D. FARELA	DATE	10/10/10
65	0.005	REV. D. FARELA	DATE	10/10/10
66	0.005	REV. D. FARELA	DATE	10/10/10
67	0.005	REV. D. FARELA	DATE	10/10/10
68	0.005	REV. D. FARELA	DATE	10/10/10
69	0.005	REV. D. FARELA	DATE	10/10/10
70	0.005	REV. D. FARELA	DATE	10/10/10
71	0.005	REV. D. FARELA	DATE	10/10/10
72	0.005	REV. D. FARELA	DATE	10/10/10
73	0.005	REV. D. FARELA	DATE	10/10/10
74	0.005	REV. D. FARELA	DATE	10/10/10
75	0.005	REV. D. FARELA	DATE	10/10/10
76	0.005	REV. D. FARELA	DATE	10/10/10
77	0.005	REV. D. FARELA	DATE	10/10/10
78	0.005	REV. D. FARELA	DATE	10/10/10
79	0.005	REV. D. FARELA	DATE	10/10/10
80	0.005	REV. D. FARELA	DATE	10/10/10
81	0.005	REV. D. FARELA	DATE	10/10/10
82	0.005	REV. D. FARELA	DATE	10/10/10
83	0.005	REV. D. FARELA	DATE	10/10/10
84	0.005	REV. D. FARELA	DATE	10/10/10
85	0.005	REV. D. FARELA	DATE	10/10/10
86	0.005	REV. D. FARELA	DATE	10/10/10
87	0.005	REV. D. FARELA	DATE	10/10/10
88	0.005	REV. D. FARELA	DATE	10/10/10
89	0.005	REV. D. FARELA	DATE	10/10/10
90	0.005	REV. D. FARELA	DATE	10/10/10
91	0.005	REV. D. FARELA	DATE	10/10/10
92	0.005	REV. D. FARELA	DATE	10/10/10
93	0.005	REV. D. FARELA	DATE	10/10/10
94	0.005	REV. D. FARELA	DATE	10/10/10
95	0.005	REV. D. FARELA	DATE	10/10/10
96	0.005	REV. D. FARELA	DATE	10/10/10
97	0.005	REV. D. FARELA	DATE	10/10/10
98	0.005	REV. D. FARELA	DATE	10/10/10
99	0.005	REV. D. FARELA	DATE	10/10/10
100	0.005	REV. D. FARELA	DATE	10/10/10