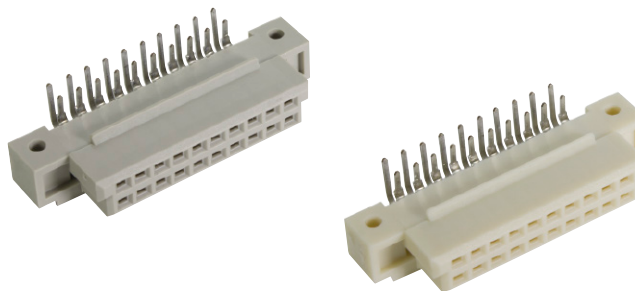


Number of contacts

32

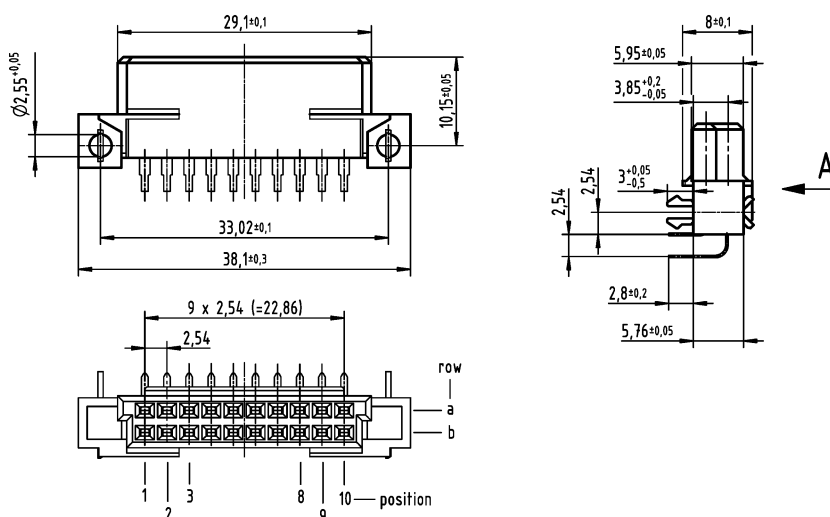


Female connectors

DIN Signal up to 2 A

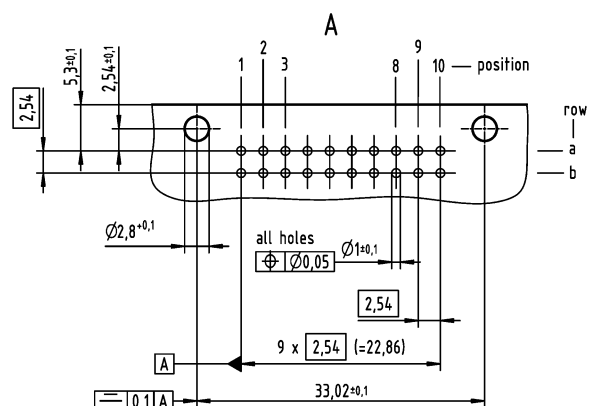
Identification	No. of contacts	Contact arrangement	Part number	Performance levels according to IEC 60603-2. Explanation chapter 00
			3	2
Female connector with angled solder pins	20		Performance level 3 on request	09 75 220 6801 09 75 420 6801 ^{b)}
THR	20			09 75 220 6804 ^{d)} 09 75 420 6804 ^{b)d)}
THR on a reel				09 75 220 6804 791 ^{d)}
				1
				Performance level 1 on request

Dimensions

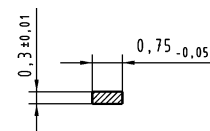


Board drillings

Mounting side



Cross section of solder terminations



Cross area (A) of contacts row a, b:
A = 0.20 - 0.23 mm²

Dimensions in mm

Other contact arrangements as well with lagging/leading pins on request
^{b)} Connectors with snap-in clips see chapter 00
^{d)} CTI > 400